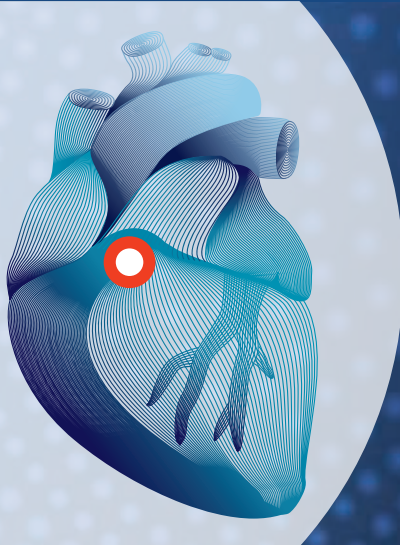


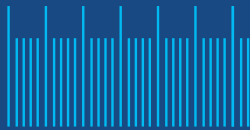
MINITUBES



Balloon expandable

HEART VALVE TUBING

With 15+ years of experience in heart valve tubing, MINITUBES offers the perfect tubing solution for your balloon expandable valve development.



Full valve size range
19 mm - 35 mm

Straightness $\leq 2\text{mm/m}$
for constant laser cutting

Tight control over OD $\pm 0.05\text{mm}$
for easy processing

Proven implantable
CoCr grade * **MP35N**
for biocompatibility
& Cleanliness

Consistent WT
 $\pm 0.02\text{mm}$
for uniform
behavior

Controlled mechanical properties
for homogeneous crimping and deployment

Smooth OD & ID surface
 $Ra < 0.2\mu\text{m}$
for device finishing

*Other alloys available on request

Tubing is the heart of your device

SELECT IT WITH CARE



Contractual requirements applicable to our THV tubing are defined in the standard specification CDC-05975 (available on our website)

Need for tubes with unique properties for your delivery devices?

Contact us, we have solutions!

MINITUBES

Phone: +33 456 58 58 88
Fax: +33 456 58 58 60
info@minitubes.com
www.minitubes.com